



***Pro-Cal***  
***Solutions***

Professional Instrumentation Services

# CAPABILITY STATEMENT

---

☎ 0415 430 123



[www.procalsolutions.com.au](http://www.procalsolutions.com.au)



[info@procalsolutions.com.au](mailto:info@procalsolutions.com.au)



# ABOUT US

**Pro-Cal**  
**Solutions**

Professional Instrumentation Services

At Pro-Cal Solutions we draw on our extensive industry experience to deliver on all phases of the instrumentation life-cycle.

This ranges from Design and Procurement, to Installation, Commissioning and Maintenance services.

Having the experience and expertise to effectively collaborate with engineering and management teams allows us to deliver outstanding solutions for site specific challenges.

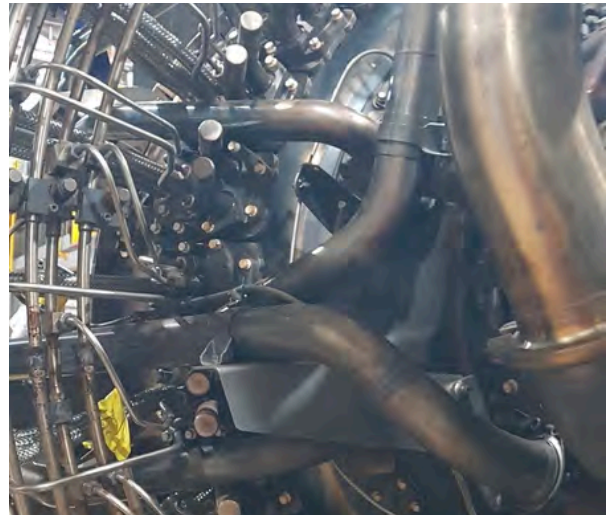
Whether it is supplying and installing the most cost-effective instrumentation solution or providing skilled E/I Technicians for your next project, shutdown or permanent role, you can trust that our team will deliver quality, reliable, client-centric and safety-conscious support to your sites.



## **E&I Commissioning, Shutdown & Maintenance Personnel**

Our experienced team of E/I Technicians come predominantly from the Oil & Gas Industry where safety is paramount and exposure to industrial turbines and instrumentation is critical.

We can provide short term labour solutions for shutdowns, campaigns and shift coverage, or longer secondments such as commissioning projects. We can also provide experienced supervisors to lead our high-calibre team of technicians.



## **Rotating Equipment E&I Support**

Pro-Cal Solutions has extensive experience with rotating machinery such as industrial gas & steam turbines, generators and compressor sets.

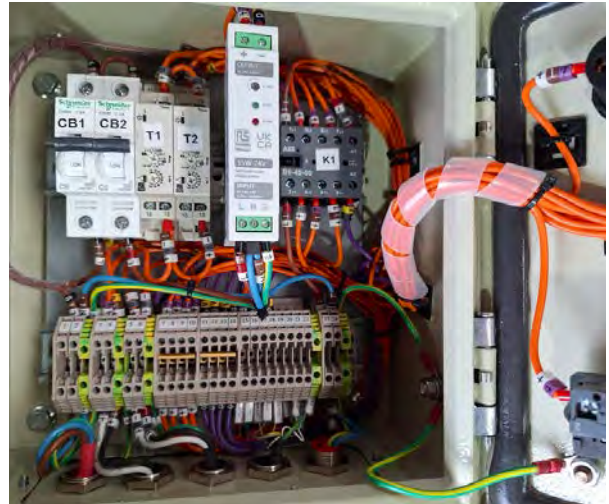
We can offer E/I support for routine servicing, equipment overhauls & replacement plus diagnosis and fault-finding.

With specific calibration equipment tailored to suit the requirements of turbines, we can execute E/I maintenance campaigns to coincide with short-duration machine outages.



## **Instrumentation & Analyser Calibrations**

Calibration of process transmitters such as pressure, temperature, level, flow, etc. Verification, calibration and repair of all types of process control and quality analysers such as trace gases, water purity, fiscal metering and gas chromatographs. Includes detailed calibrations sheets referencing NATA certified testing equipment.



## **Design, Consulting & Procurement**

Utilising our exposure to a vast array of process instrumentation systems over the last 22 years, we can tailor a cost-effective solution to any instrumentation problem or requirement. We will select the most suitable instruments and accessories for any given application and supply them at competitive prices. We can also design, fabricate and supply electrical control systems to interface with our instrumentation products for the complete package of process control and measurement systems.

# OUR CLIENTS

***Pro-Cal  
Solutions***

Professional Instrumentation Services



**"In these times where many claim to be 'qualified' Jason and his team really are the real deal. They recently worked on a new instrumentation installation at our Kemerton site. It was a rush job, so it required broad capability to get the job done. Everything from tubing to chasing existing I/O with the PLC engineer they were professional and knowledgeable."**

*Peter McManus, Project Manager,  
COE Operations Engineering  
BOC Gases Ltd*

**"Partnering with Pro-Cal Solutions has enhanced our project delivery capabilities. Their technical expertise, professionalism, and proactive approach make them a valuable part of our team. We recommend Pro-Cal Solutions to any organisation seeking top-notch instrumentation services."**

*Harlan Mullins, Mechanical  
Engineer, Rotation Solutions*





# CONTACT US

Phone: 0415430123 / 0499550789

Email: [info@procalolutions.com.au](mailto:info@procalolutions.com.au)

[www.procalolutions.com.au](http://www.procalolutions.com.au)



***Pro-Cal  
Solutions***

Professional Instrumentation Services